

GEX-C

Application

For domestic hot water system such as mix water underfloor heating system, air energy hot water circulation system, solar hot water circulation system and family hot, cold water pressurization circulation, etc.



EEI ≤ 0.21 8M
EEI ≤ 0.20 4.6M

iPWM **ErP**
READY

CE RoHS
Compliant

TSE

UK
CA

Main features

- EEI ≤ 0.21
- Permanent magnet plastic injection motor, intelligent frequency control
- Compact size, easy for installation
- Proportional pressure mode
- Constant pressure mode
- Constant speed mode
- AUTO adapt mode
- PWM external control optional
- Visualized operation
- Low noise, low temperature

Working condition

- Liquid temperature: 2°C ~ 110°C
- Ambient temperature: 0 ~ +40°C
- Max system pressure: 10bar
- Protection level: IP44
- Rated voltage/frequency: 220V ~ 240V/50Hz
- Insulation class: E
- Pumped liquid characteristics: clean liquid, free from solids and mineral oils, non-toxic, chemically neutral, close to the characteristics of water
- Installation: the motor shaft must be kept in horizontal direction

Functions for different model

Model	Internal control			External control
	PP	CP	CS	PWM
GEX XX - X - XXX	I	I	I	PWM1
	II	II	II	
	III	III	III	
	AUTO	/	/	
GEX XX - X - XXX PWM1	/	/	III	PWM1
GEX XX - X - XXX PWM2	/	/	III	PWM2

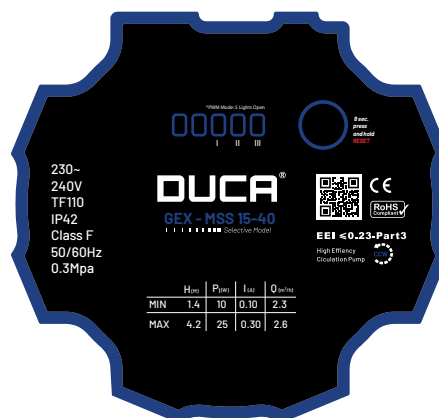


Flow Rate
2.6 m³/h

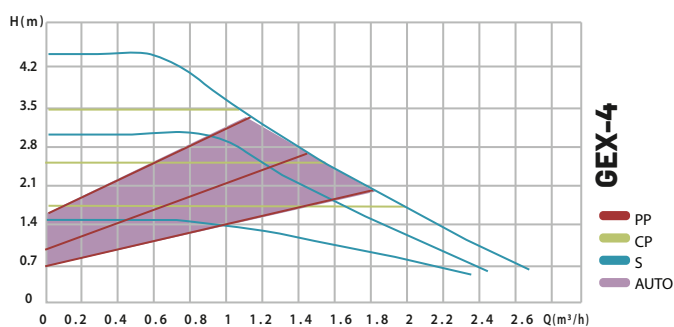
Pump Head
4 m

GEX-C 25/15-40

Nameplate



Performance Curve



EEI ≤ 0.20

iPWM

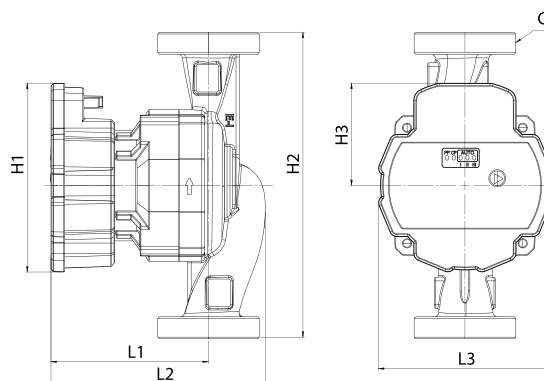
**ErP
READY**

CE RoHS
Compliant

TSE

**UK
CA**

Dimension



L1 193 mm
L2 126 mm
L3 99 mm

H1 110 mm
H2 130/180 mm
H3 60 mm

Different Model

Model	Min/Max Temp (°C)	L (mm)	DN	P1 Max	Voltage (V)	Rated current (A)	Union
15-4-130	-10 to +110	130	15mm G1	25	1x230	0,3	G1 to G3/4
25-4-130	-10 to +110	130	25mm G1½	25	1x230	0,3	G1½ to G1
25-4-180	-10 to +110	180	25mm G1½	25	1x230	0,3	G1½ to G1

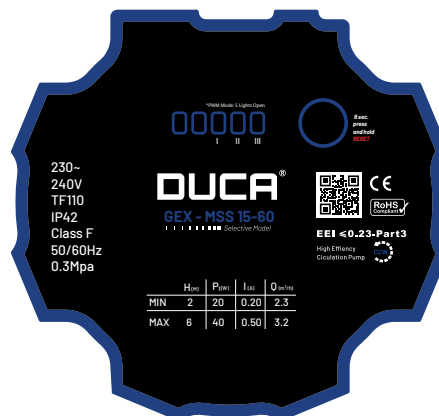
GEX-C 25/15-60



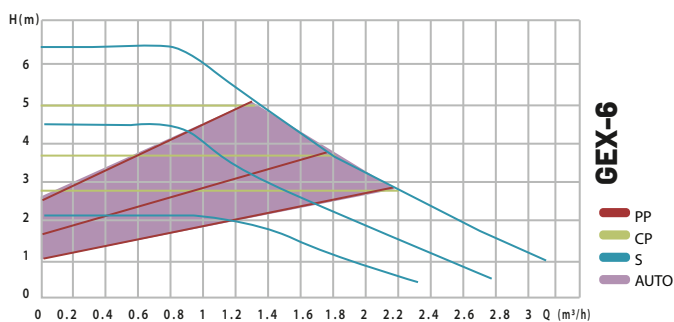
Flow Rate
3.2 m³/h

Pump Head
6 m

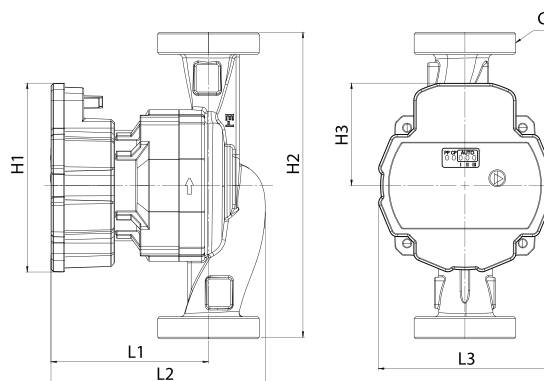
Nameplate



Performance Curve



Dimension



L1 193 mm
L2 126 mm
L3 99 mm

H1 110 mm
H2 130/180 mm
H3 60 mm

EEI ≤ 0.20

iPWM

ErP
READY

CE RoHS
Compliant

TSE

UK
CA

Different Model

Model	Min/Max Temp (°C)	L (mm) H2	DN G	P1 Max	Voltage (V)	Rated current (A)	Union
15-6-130	-10 to +110	130	15mm G1	40	1x230	0,5	G1 to G3/4
15-6-180	-10 to +110	180	15mm G1	40	1x230	0,5	G1 to G3/4
25-6-130	-10 to +110	130	25mm G1½	40	1x230	0,5	G1½ to G1
25-6-180	-10 to +110	180	25mm G1½	40	1x230	0,5	G1½ to G1
32-6-180	-10 to +110	180	32mm G2	40	1x230	0,5	G2 to G1¼

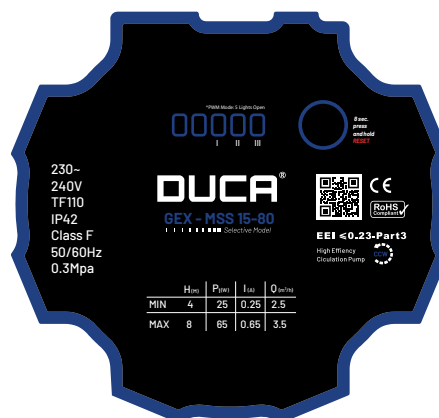


Flow Rate
3.5 m³/h

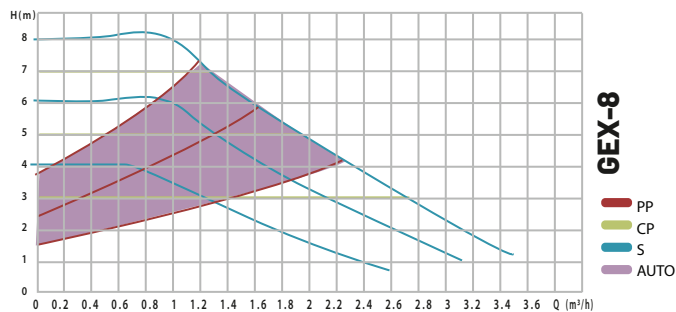
Pump Head
8 m

GEX-C 25/15-80

Nameplate



Performance Curve



EEI ≤ 0.21

IPWM

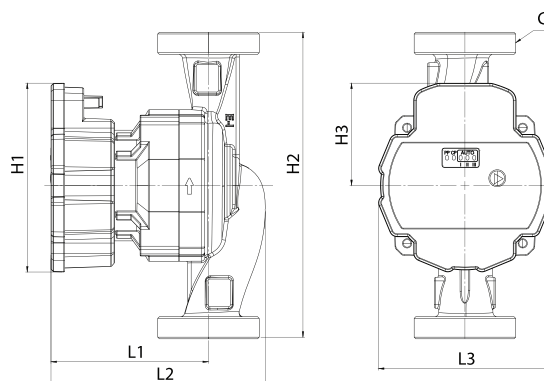
ErP
READY

CE RoHS
Compliant

TSE

UK
CA

Dimension



L1 193 mm
L2 126 mm
L3 99 mm

H1 110 mm
H2 130/180 mm
H3 60 mm

Different Model

Model	Min/Max Temp (°C)	L (mm) H2	DN G	P1 Max	Voltage (V)	Rated current (A)	Union
15-8-130	-10 to +110	130	15mm G1	65	1x230	0,65	G1 to G3/4
15-8-180	-10 to +110	180	15mm G1	65	1x230	0,65	G1 to G3/4
25-8-130	-10 to +110	130	25mm G1½	65	1x230	0,65	G1½ to G1
25-8-180	-10 to +110	180	25mm G1½	65	1x230	0,65	G1½ to G1
32-8-180	-10 to +110	180	32 mm G2	65	1x230	0,65	G2 to G1¼